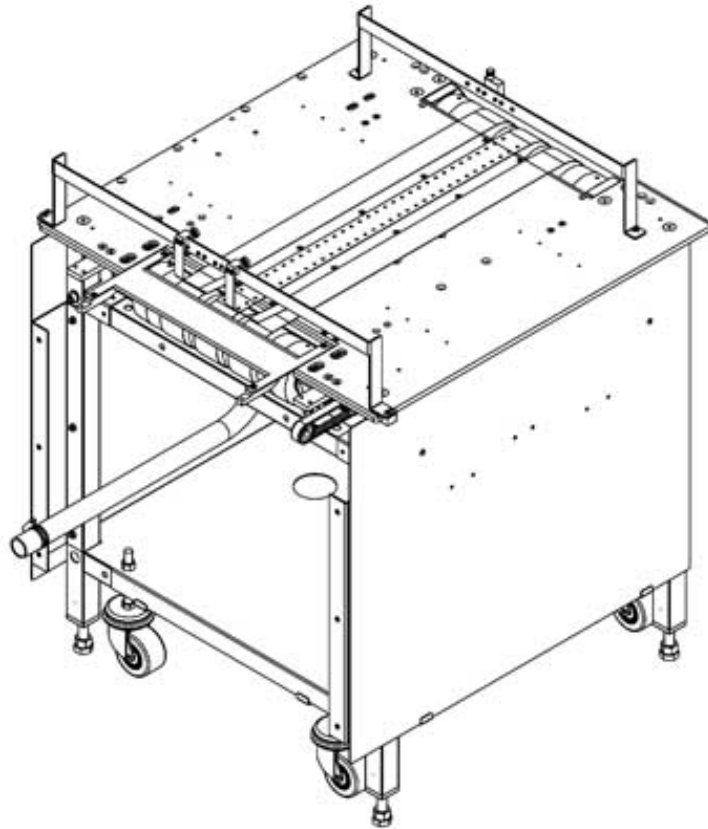


PITNEY BOWES

FLEXIBLE INKJET TRANSPORT 30" FIT DRYER BASE (SLV)

Parts Manual



DIRECT MAIL SOLUTIONS

12050 49th STREET NORTH - CLEARWATER, FL. 33762-4301
PHONE: 727.571.3330 - FAX: 727.571.3443 - TOLL FREE: 1.800.INSERTER
web: sure-feed.com

© Copyright, Pitney Bowes Inc. 2010 All rights reserved

VERSION HISTORY

The table below summarizes the history of this document as it is published onto the company website(s). It identifies the version, date of issue and revisions and changes.

VERSION	DATE	CHANGES
FIT-Dryer Base parts rev0	4/01/2009	ORIGINAL RELEASE

REVISION CONVENTIONS-DOCUMENT

VERSION: name of document with revision_level of entire document- level designates minor changes that do not require revision change

DATE: date of issue for copying and publication of document.

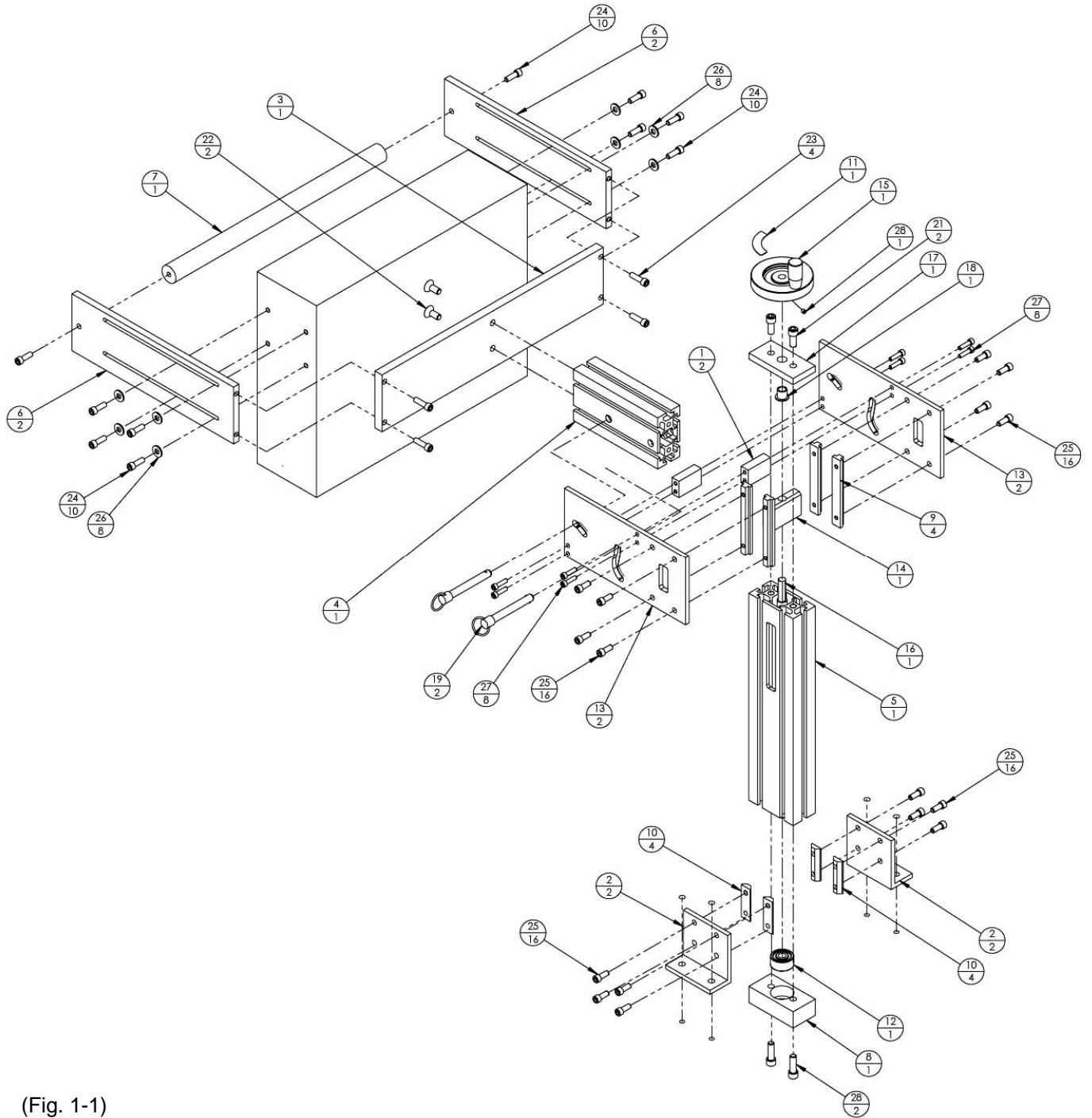
CHANGES: details of document revision_level.

Table of Contents

Topic	Page
Fit Dryer Mount Assembly.....	4
Tensioner Assembly.....	6
Vacuum Conveyore (SLV).....	7
Vacuum Conveyor (Showing Motor w/ Belt).....	9
Wide Transition.....	11
Drive Roller.....	13
FIT Dryer MTG. 9000 W.....	14
Transition.....	16
Sensor Bar (Diffused).....	17
Transition 9Front End).....	18
Drag Strap Assembly.....	20
Motor Assembly.....	21
Frame (SLV).....	22
Vacuum Chamber.....	24
Transition Drag Strap.....	25
FIT Dryer SLV Base.....	26

FIT DRYER MOUNT ASSEMBLY 16020-574 (Fig. 1-1)
--

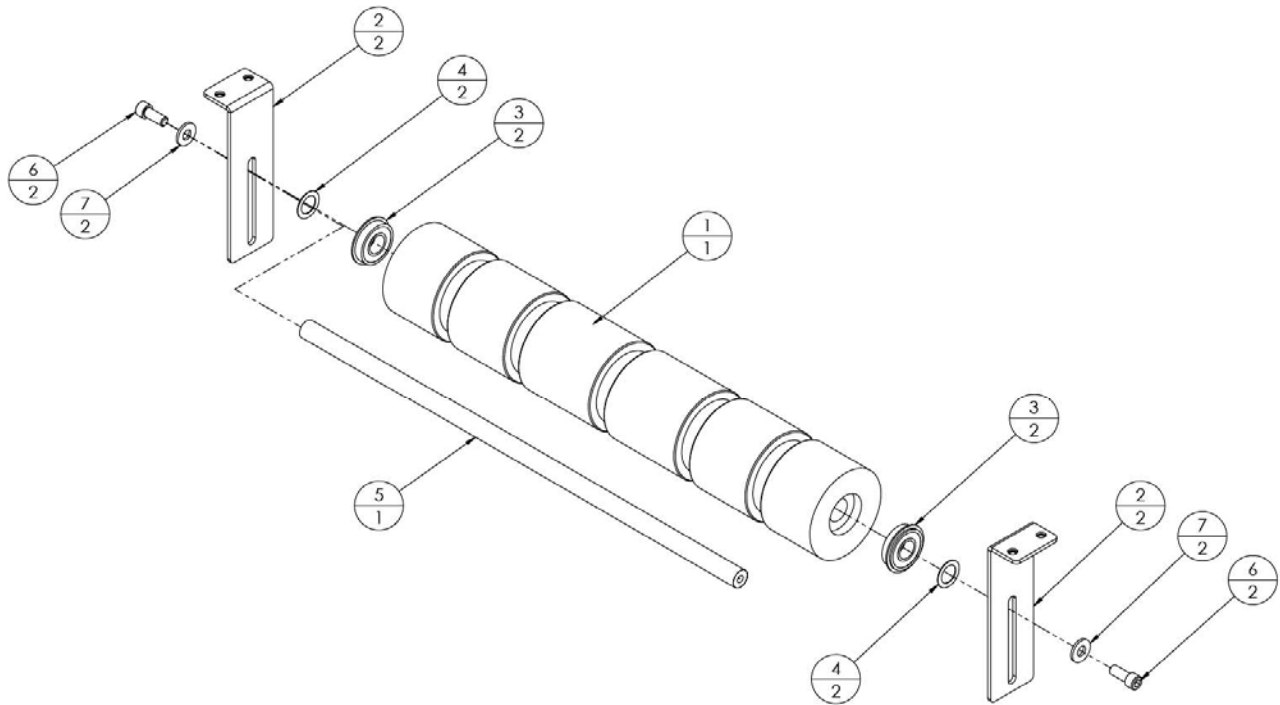
ITEM #	PART #	DESCRIPTION	QTY
1	16011-268	PLATE, CROSS SUPPORT	2
2	16009-191	BRACKET, DRYER MTG.	2
3	16009-117	BRACKET, DRYER	1
4	16008-199	BAR, DRYER PIVOT	1
5	16008-145	BAR, VERT. ADJ	1
6	16011-271	PLATE, DRYER MTG.	2
7	16008-146	BAR, DRYER HANDLE	1
8	16007-240	BLOCK, BEARING	1
9	16011-269	PLATE, VERTICAL ADJUSTMENT	4
10	16011-364	PLATE, NUT (DRYER MTG.)	4
11	16015-010	LABEL, UP, DOWN	1
12	99003-061	BEARING, 10mmB	1
13	16011-331	PLATE, DRYER PIVOT	2
14	16007-160	BLOCK, VERTICAL ADJUST.	1
15	99004-008	HANDWHEEL, 3.15 OD 3/8 B. W/ HANDLE	1
16	16004-174	SHAFT, ADJUST	1
17	16011-272	PLATE, TOP BUSHING	1
18	99003-036	BUSHING, FLANGE 3/8 X 1/2 X 1/2	1
19	99039-184	PIN, QUIK RELEASE	2
21	-	SHCS, 5/16-18 X 3/4	2
22	-	FHCS, 5/16-18 X 3/4	2
23	-	SHCS, 1/4-20 X 7/8	4
24	-	SHCS, 1/4-20 X 3/4	10
25	-	SHCS, 1/4-20 X 5/8	16
26	-	FLAT WASHER, 1/4	8
27	-	SHCS, 10-24 X 3/4	8
28	-	SET SCREW, FLAT PT. 10-24 X 3/16	1
28	-	SHCS, 5/16-18 X 1	2



(Fig. 1-1)

Assembly, Tensioner 16020-637 (Fig. 1-2)

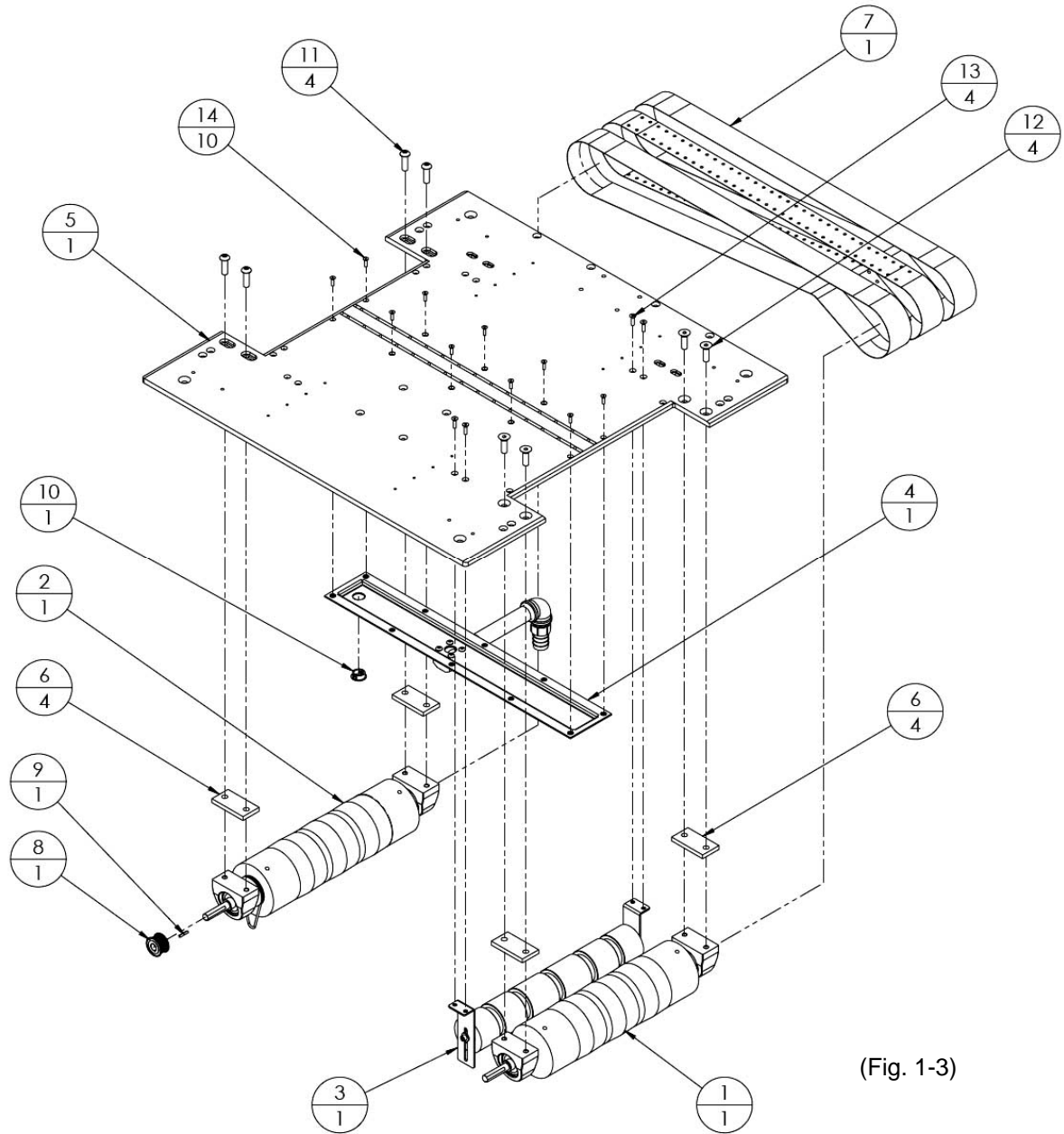
ITEM #	PART #	DESCRIPTION	QTY
1	16006-173	ROLLER, TENSIONER	1
2	16009-183	BRACKET, TENSIONER MTG.	2
3	99003-047	BEARING, 1/2x1-1/8, SEALED W/ S.R. (HIGH TEMP GREASE)	2
4	99036-004	SHIM, 1/2 X 3/4 X .020	2
5	16004-231	SHAFT, IDLER ROLLER	1
6	-	SHCS, 1/4-20 X 5/8	2
7	-	FW, 1/4	2



(Fig. 1-2)

Assembly, Vacuum Conveyor (SLV), 16020-646 (Fig. 1-3)

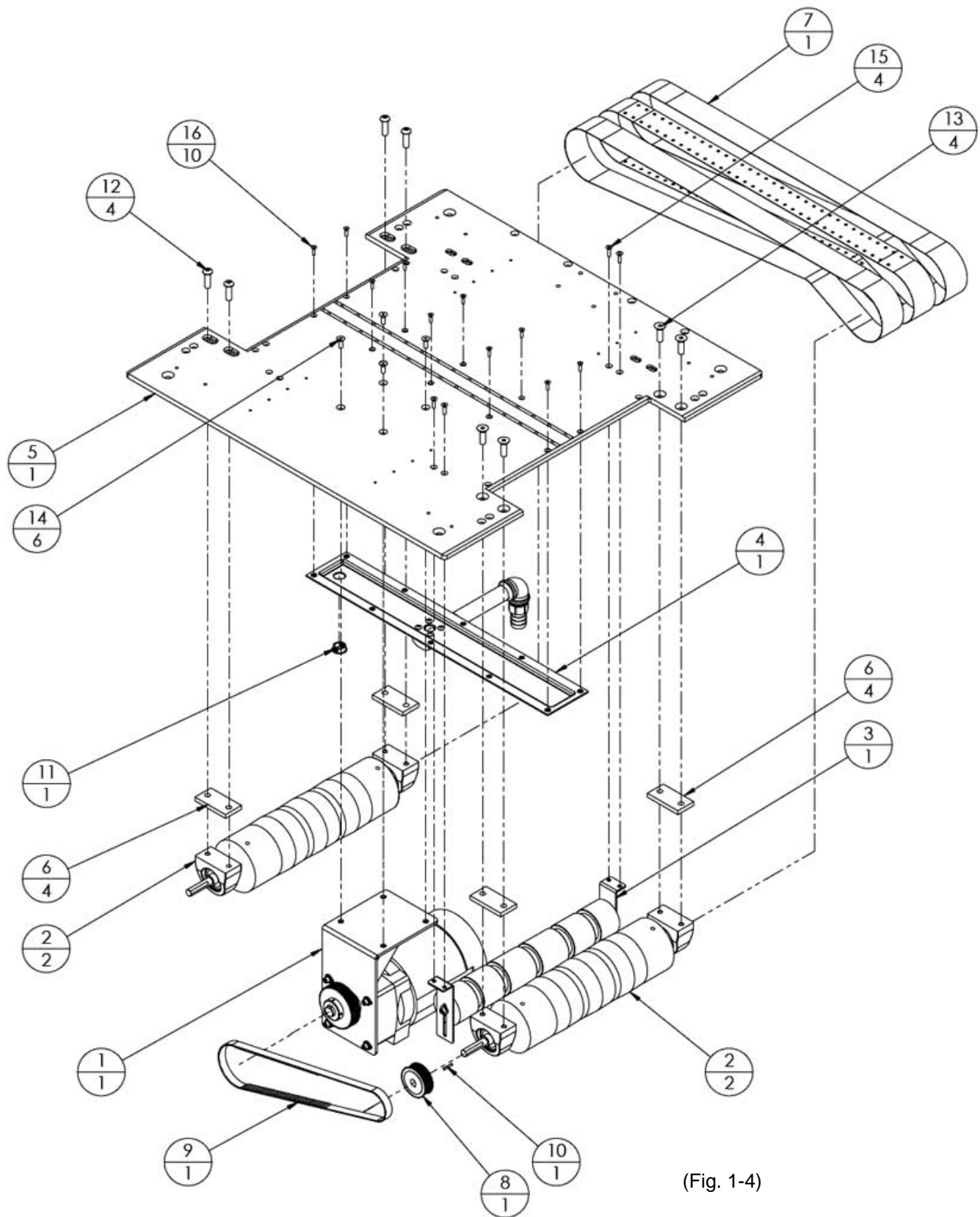
ITEM #	PART #	DESCRIPTION	QTY
1	16020-673	ASSY, DRIVE ROLLER	1
2	16020-672	ASSY, DRIVE ROLLER W/ ORING	1
3	16020-637	ASSY, TENSIONER	1
4	16020-818	ASSY, VACUUM CHAMBER	1
5	16011-403	PLATE, TOP	1
6	16012-091	SPACER, BEARING BLOCK VIBRATION	4
7	16014-059	BELT SET, DRYER, 2" W X 64.50" L	1
8	16006-165	PULLEY, TIMING 20-5M-15, 1/2 B.	1
9	99034-003	KEY, SQUARE, 1/8 X 3/4	1
10	98015-042	FINISH PLUG, BLACK, 13/16"	1
11	-	SBHCS, 3/8-16 X 1-1/4 (FOR ITEM #2)	4
12	-	FHCS, 3/8-16 X 1-1/4 (FOR ITEM #1)	4
13	-	FHCS, #10-24 X 3/4 (FOR ITEM #3)	4
14	-	FHCS, #8-32 X 5/8 (FOR ITEM #5)	10



(Fig. 1-3)

Assembly, Vacuum Conveyor (Showing Motor w/ Belts), 16020-675 (Fig. 1-4)

ITEM #	PART #	DESCRIPTION	QTY
1	16020-738	ASSY, MOTOR	1
2	16020-673	ASSY, DRIVE ROLLER	2
3	16020-637	ASSY, TENSIONER	1
4	16020-818	ASSY, VACUUM CHAMBER	1
5	16011-403	PLATE, TOP	1
6	16012-091	SPACER, BEARING BLOCK VIBRATION	4
7	16014-059	BELT SET, DRYER, 2" W X 64.50" L	1
8	99002-168	PULLEY, TIMING, HTD, 34-5M-15, 1/2" B	1
9	99000-388	BELT, TIMING, HTD, 890-5M-15	1
10	99034-003	KEY, SQUARE, 1/8 X 3/4	1
11	98015-042	FINISH PLUG, BLACK, 13/16"	1
12	-	SBHCS, 3/8-16 X 1-1/4	4
13	-	FHCS, 3/8-16 X 1-1/4	4
14	-	FHCS, 1/4-20 X 3/4	6
15	-	FHCS, #10-24 X 3/4	4
16	-	FHCS, #8-32 X 5/8	10



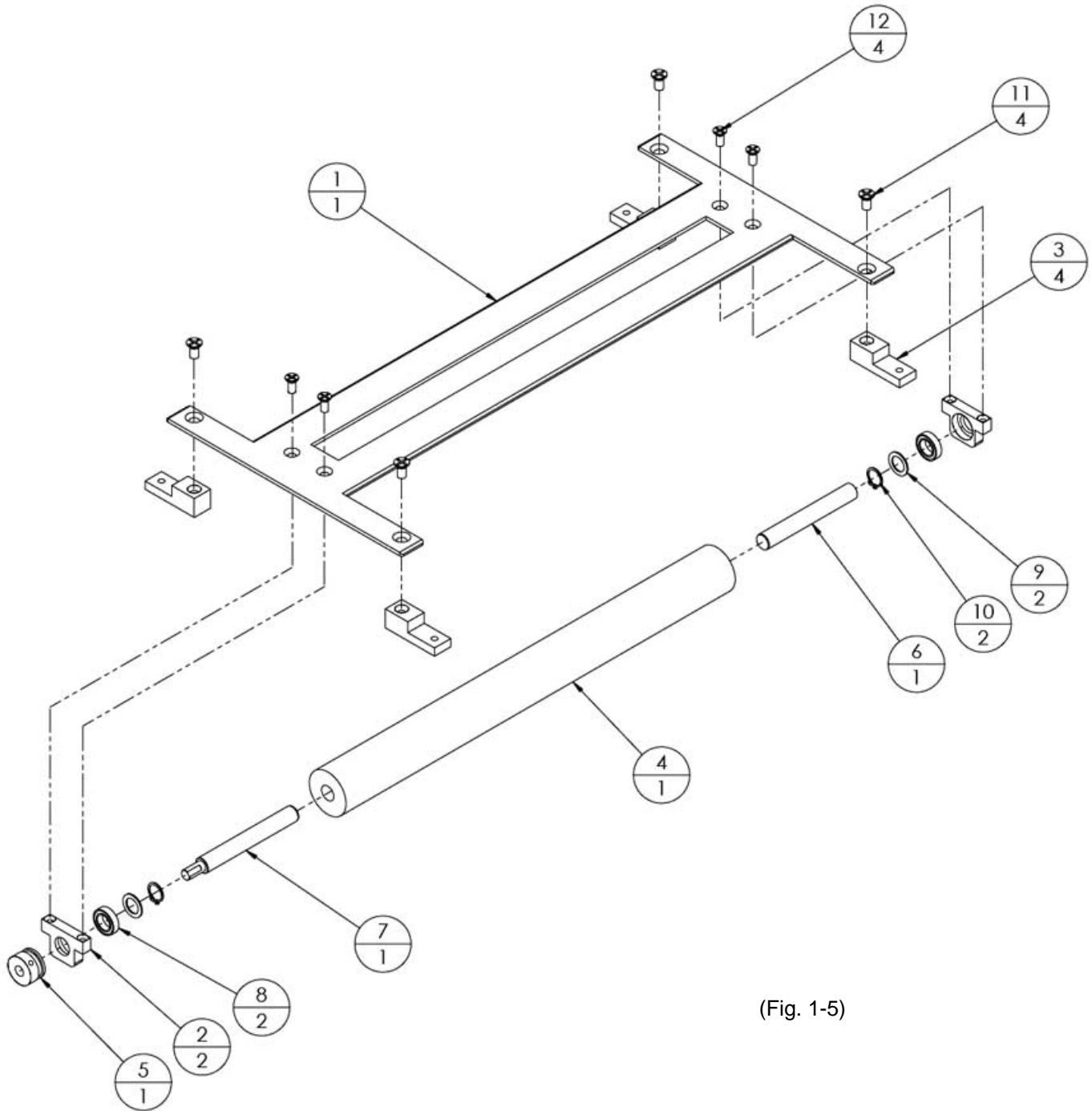
(Fig. 1-4)

Assembly, Wide Transition (w/ 5 Belts), 16020-654 (Fig. 1-5)

ITEM #	PART #	DESCRIPTION	QTY
1	16013-336	COVER, TRANASTION, WIDE	1
2	16007-241	BLOCK, BEARING	2
3	16007-242	BLOCK, TRANSITION PLATE MTG.	4
4	16006-180	PULLEY, WIDE TRANSITION	1
5	16006-177	PULLEY, O-RING DRIVE, TRANSITION	1
6	16004-254	SHAFT, STUD IDLER	1
7	16004-255	SHAFT, STUB DRIVE	1
8	99003-079	BEARING, 3/8 X 5/8	2
9	99003-016	WASHER, NYLON, 3/8 X 1/32	2
10	99022-003	SNAP RING, 3/8	2
11	-	FHMS, #10-24 X 3/8	4
12	-	FHMS, #8-32 X 3/8	4
13	-	SET SCREW, FLAT, #6-32 X 1/4 (FOR ITEM #5)	1

Special Note

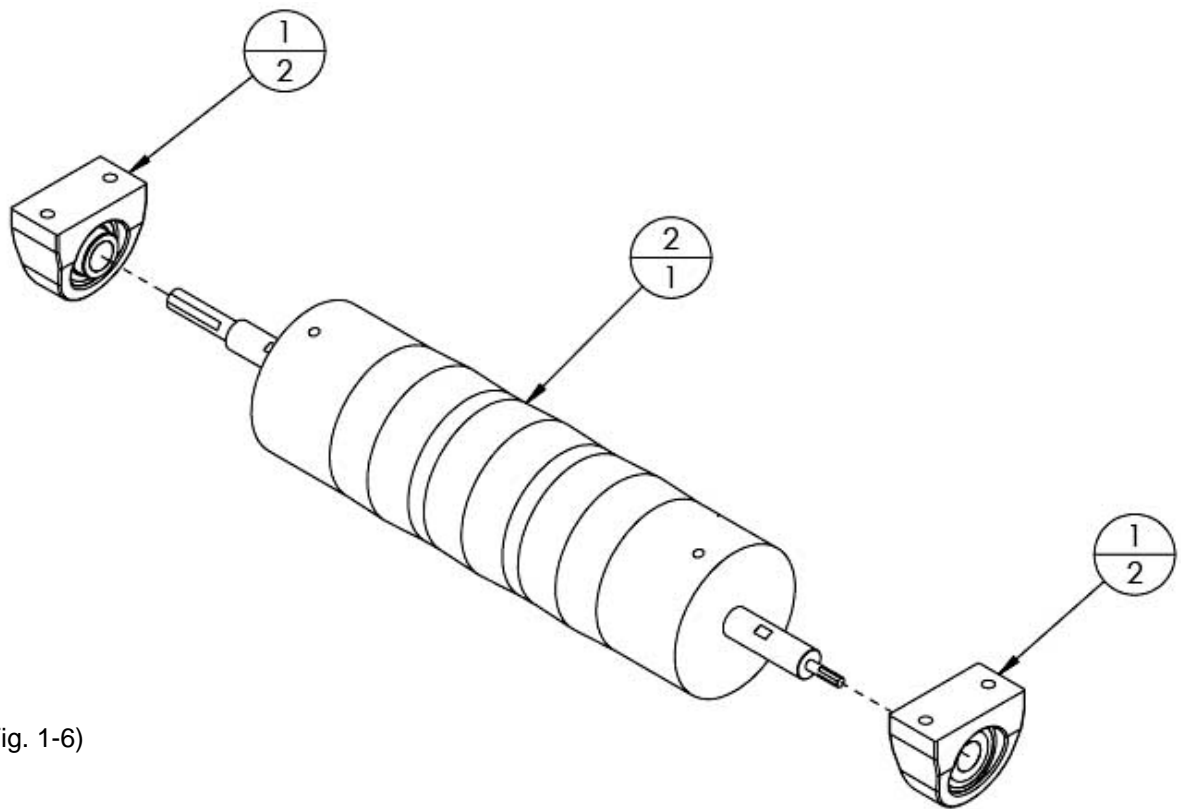
FIT Dryer Bases (SLV) built before March of 2010 use parts in Transition Assembly # 16020-654.
FIT Dryer Bases (SLV) built after March of 2010 refer to page 26 for Transition parts
(Newer parts can be used on early model machines)



(Fig. 1-5)

Assembly, Drive Roller, 16020-673 (Fig. 1-6)

ITEM #	PART #	DESCRIPTION	QTY
1	99003-132	BEARING, PILLOW BLOCK, 3/4 BORE	2
2	16020-724	ASSY, CROWNED PULLEY	1
3	99006-021	PIN ROLL, 3/16 X 1-1/4	2

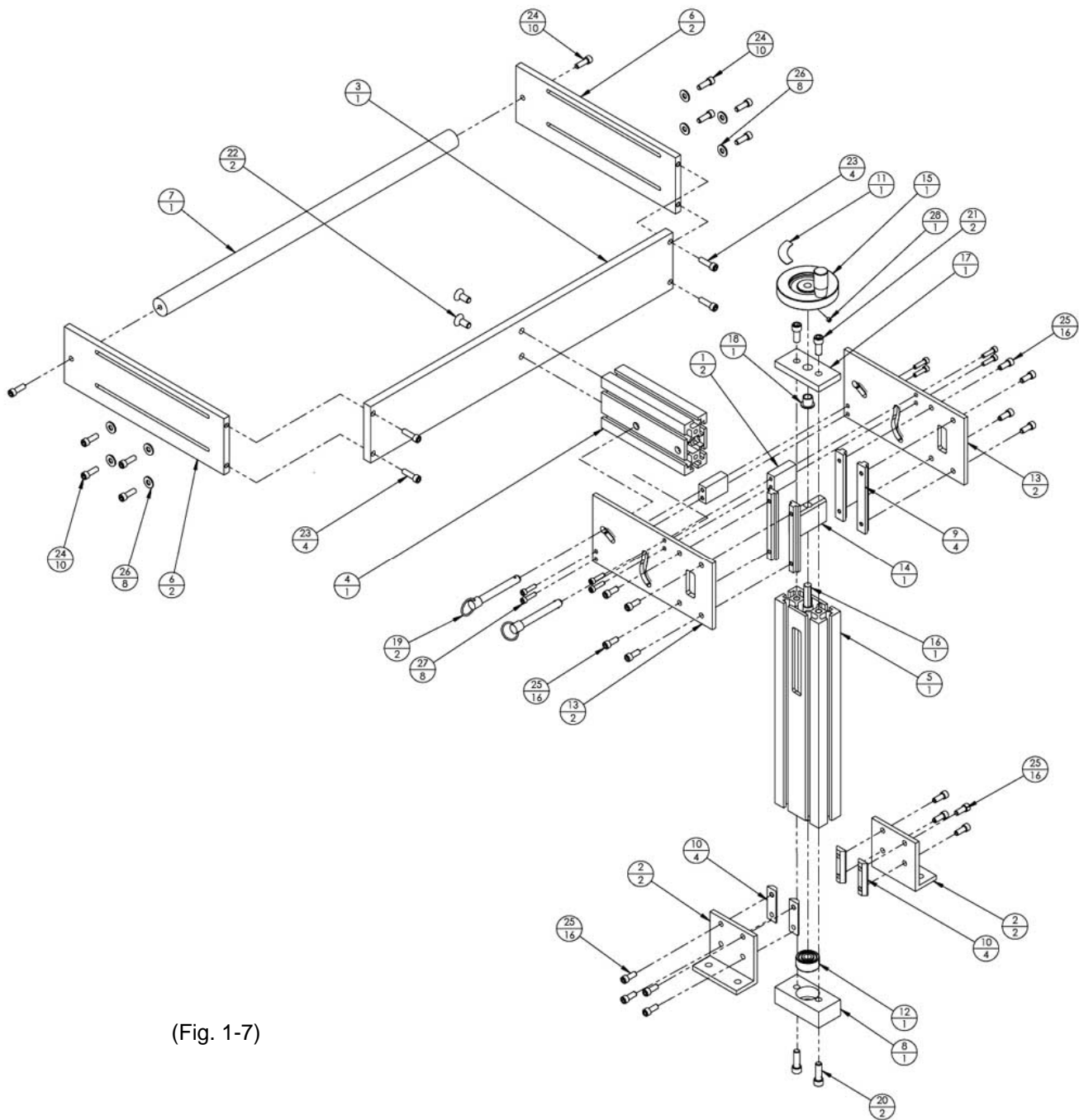


(Fig. 1-6)

Assembly, FIT Dryer MTG. 9000 W, 16020-677 (Fig. 1-7)

ITEM #	PART #	DESCRIPTION	QTY
1	16011-268	PLATE, CROSS SUPPORT	2
2	16009-191	BRACKET, DRYER MTG.	2
3	16009-139	BAR, DRYER MOUNTING, 5061	1
4	16008-199	BAR, DRYER PIVOT	1
5	16008-145	BAR, VERT. ADJ	1
6	16011-271	PLATE, DRYER MTG.	2
7	16008-164	BAR, DRYER HANDLE, 5061	1
8	16007-240	BLOCK, BEARING	1
9	16011-269	PLATE, VERTICAL ADJUSTMENT	4
10	16011-364	PLATE, NUT (DRYER MTG.)	4
11	16015-010	LABEL, UP, DOWN	1
12	99003-061	BEARING, 10mmB	1
13	16011-331	PLATE, DRYER PIVOT	2
14	16007-160	BLOCK, VERTICAL ADJUST.	1
15	99004-008	HANDWHEEL, 3.15 OD 3/8 B. W/ HANDLE	1
16	16004-174	SHAFT, ADJUST	1
17	16011-272	PLATE, TOP BUSHING	1
18	99003-036	BUSHING, FLANGE 3/8 X 1/2 X 1/2	1
19	99039-184	PIN, QUIK RELEASE	2
20	-	SHCS, 5/16-18 X 1	2
21	-	SHCS, 5/16-18 X 3/4	2
22	-	FHCS, 5/16-18 X 3/4	2
23	-	SHCS, 1/4-20 X 7/8	4
24	-	SHCS, 1/4-20 X 3/4	10
25	-	SHCS, 1/4-20 X 5/8	16
26	-	FLAT WASHER, 1/4	8
27	-	SHCS, 10-24 X 3/4	8
28	-	SET SCREW, FLAT PT. 10-24 X 3/16	1

PITNEY BOWES

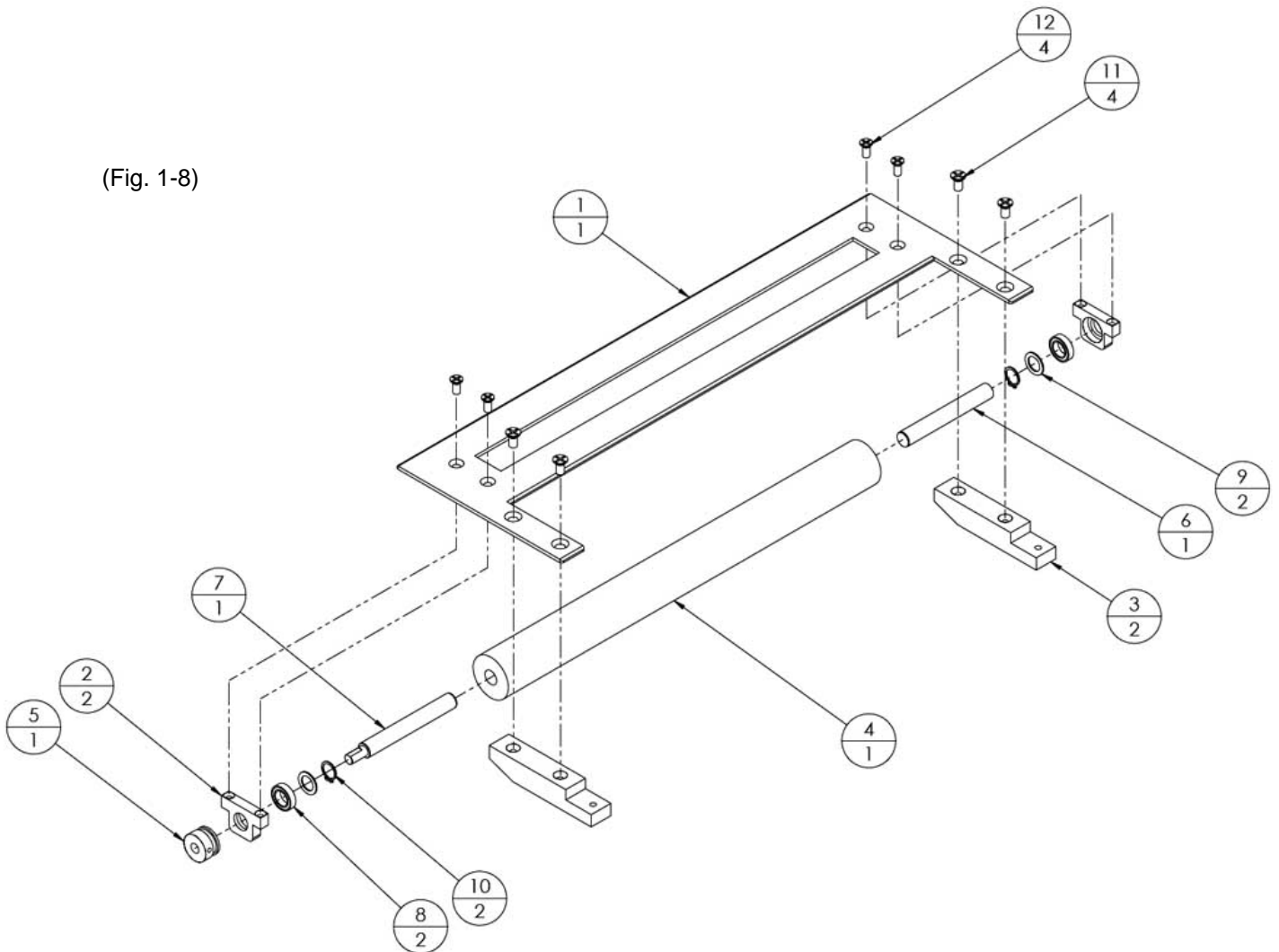


(Fig. 1-7)

Assembly, Transition, 16020-686 (Fig. 1- 8)

ITEM #	PART #	DESCRIPTION	QTY
1	16011-377	PLATE, TRANSITION	1
2	16007-241	BLOCK, BEARING	2
3	16007-246	BLOCK, DIVERT GUIDE MTG.	2
4	16006-180	PULLEY, WIDE TRANSITION	1
5	16006-177	PULLEY, O-RING DRIVE, TRANSITION	1
6	16004-254	SHAFT, STUD IDLER	1
7	16004-255	SHAFT, STUB DRIVE	1
8	99003-079	BEARING, 3/8 X 5/8	2
9	99003-016	WASHER, NYLON, 3/8 X 1/32	2
10	99022-003	SNAP RING, 3/8	2
11	-	FHMS, #10-24 X 3/8	4
12	-	FHMS, #8-32 X 3/8	4
13	-	SET SCREW, FLAT, #6-32 X 1/4 (FOR ITEM #5)	1

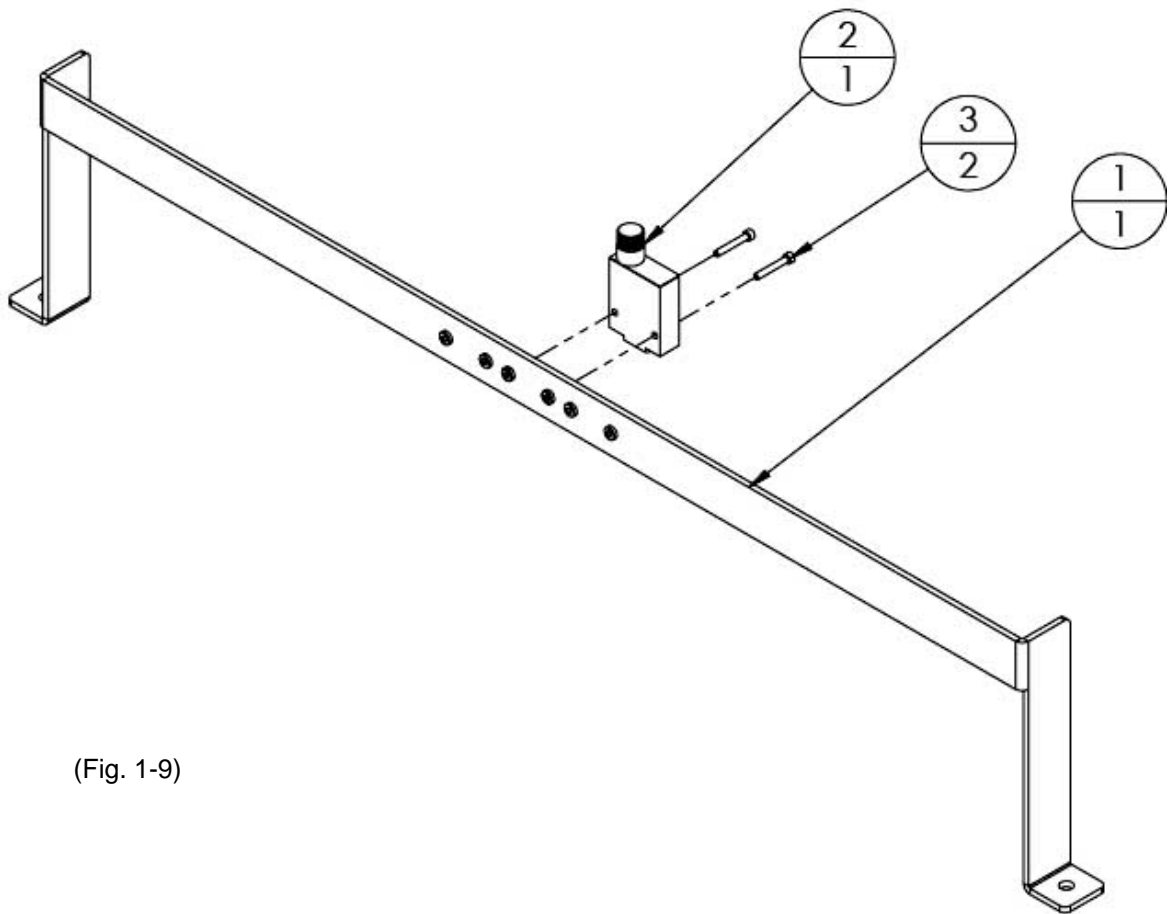
(Fig. 1-8)



Note: This Transition assembly mounts on LEFT SIDE of Ink Jet Base

Assembly, Sensor bar (Diffused), 16020-691 (Fig. 1-9)

ITEM #	PART #	DESCRIPTION	QTY
1	16009-235	BRACKET, SENSOR MTG.	1
2	98009-036	SENSOR, BANNER MINI BEAM	1
3	-	SHCS, #4-40 X 3/4	2

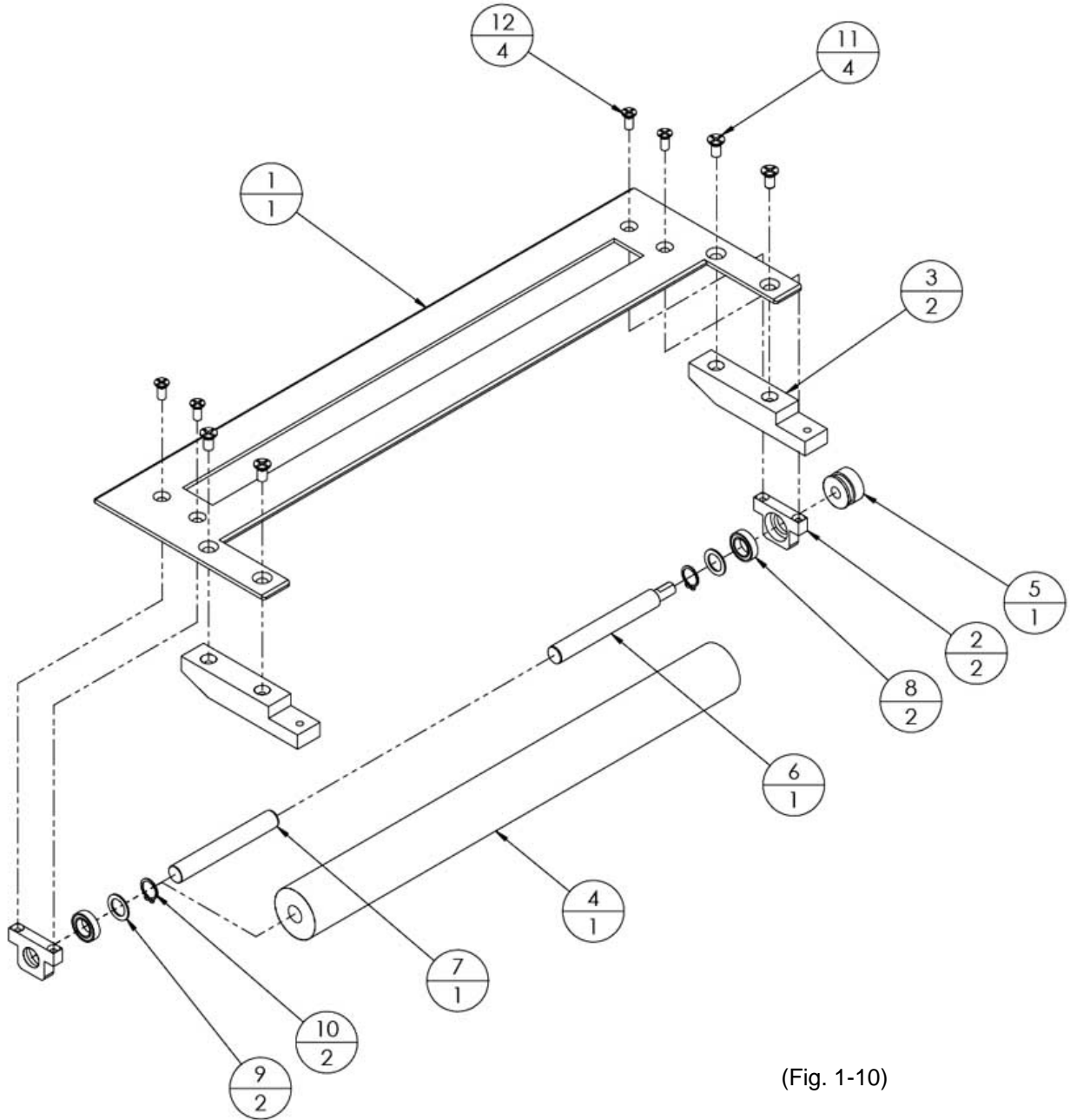


(Fig. 1-9)

Assembly, Transition(Front End), 16020-702 (Fig. 1-10)

ITEM #	PART #	DESCRIPTION	QTY
1	16011-381	PLATE, TRANSITION, FRONT END	1
2	16007-241	BLOCK, BEARING	2
3	16007-246	BLOCK, DIVERT GUIDE MTG.	2
4	16006-180	PULLEY, WIDE TRANSITION	1
5	16006-177	PULLEY, O-RING DRIVE, TRANSITION	1
6	16004-255	SHAFT, STUB DRIVE	1
7	16004-254	SHAFT, STUD IDLER	1
8	99003-079	BEARING, 3/8 X 5/8	2
9	99003-016	WASHER, NYLON, 3/8 X 1/32	2
10	99022-003	SNAP RING, 3/8	2
11	-	FHMS, #10-24 X 3/8	4
12	-	FHMS, #8-32 X 3/8	4
13	-	SET SCREW, FLAT, #6-32 X 1/4 (FOR ITEM #5)	1

Note: This Transition assembly mounts on RIGHT SIDE of Ink Jet Base

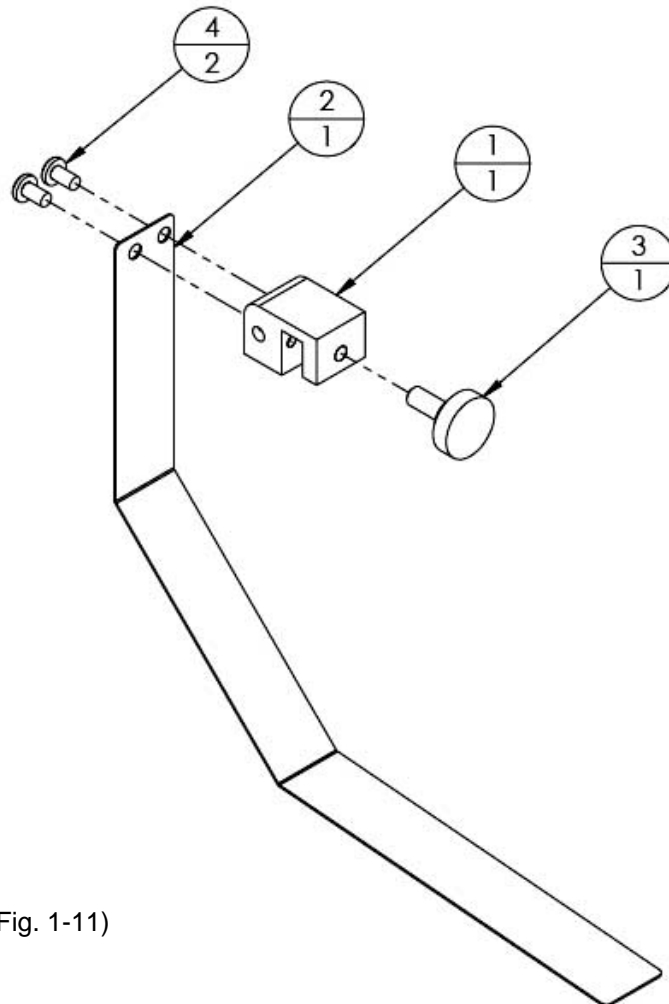


(Fig. 1-10)

Note: This Transition assembly mounts on RIGHT SIDE of Ink Jet Base

Assembly, Drag Strap, 16020-726 (Fig. 1-11)

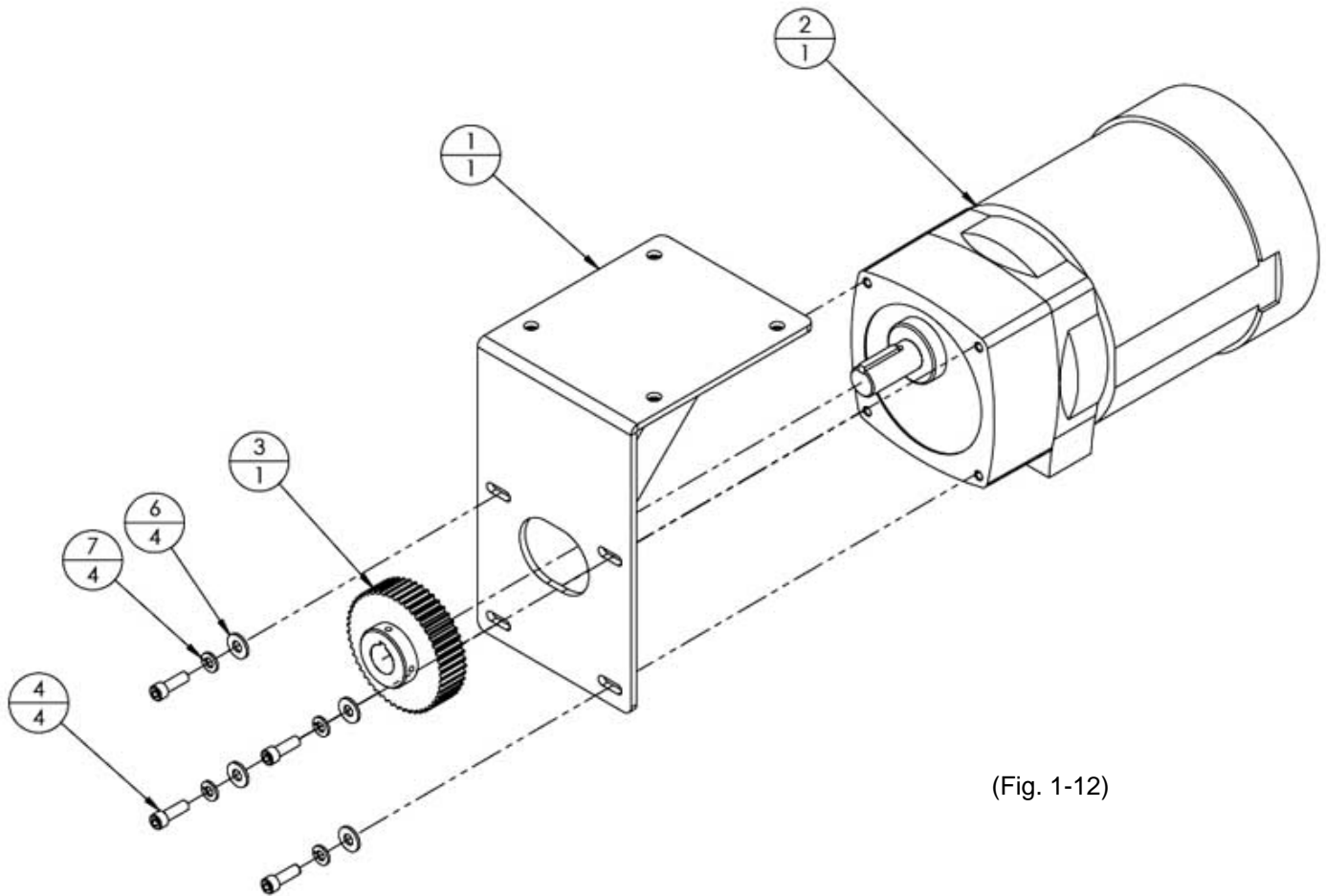
ITEM #	PART #	DESCRIPTION	QTY
4	-	PHMS, #6-32 X 1/4	2
3	10020-317	ASSY, KNOB, #10-24 x 1/2	1
2	16005-097	GUIDE, PAPER HOLD DOWN	1
1	18009-014	BRCKET, DRAG STRAP MTG	1



(Fig. 1-11)

Assembly, Motor, 16020-738 (Fig. 1-12)

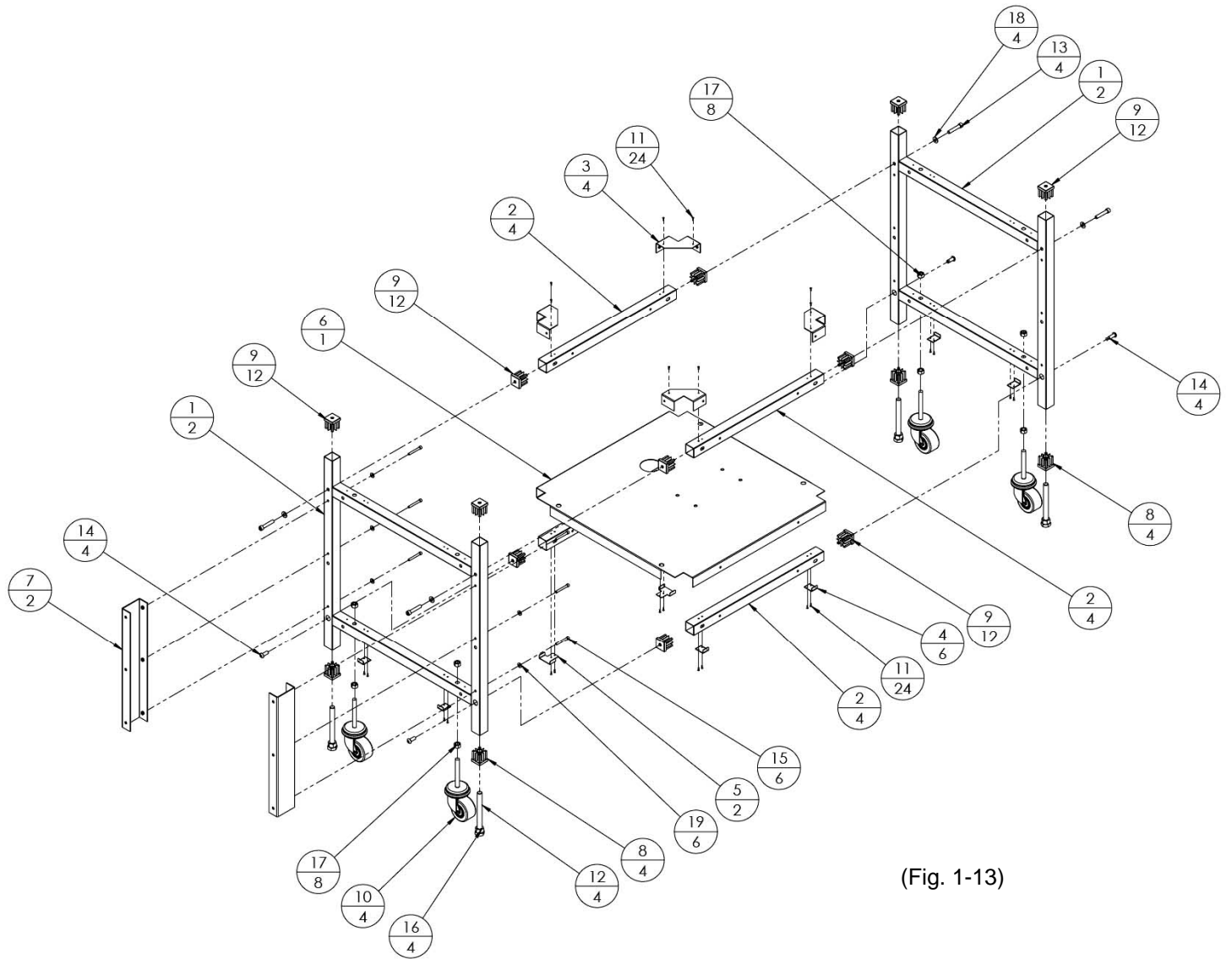
ITEM #	PART #	DESCRIPTION	QTY
1	16009-224	BRACKET, MOTOR MTG.	1
2	99001-068	MOTOR, 1/2 HP, 5:1, 340 RPM	1
3	16006-198	PULLEY, TIMING, HTD, 50-5M-15, 3/4" BORE	1
4	-	SHCS, 1/4-28 x 3/4	4
5	-	SET SCREW, FLAT, #10-32 X 1/4 (ITEM #3)	1
6	-	FW, 1/4	4
7	-	LOCK WASHER, 1/4	4



(Fig. 1-12)

Assembly, FRAME (SLV), 16020-811 (Fig. 1-13)

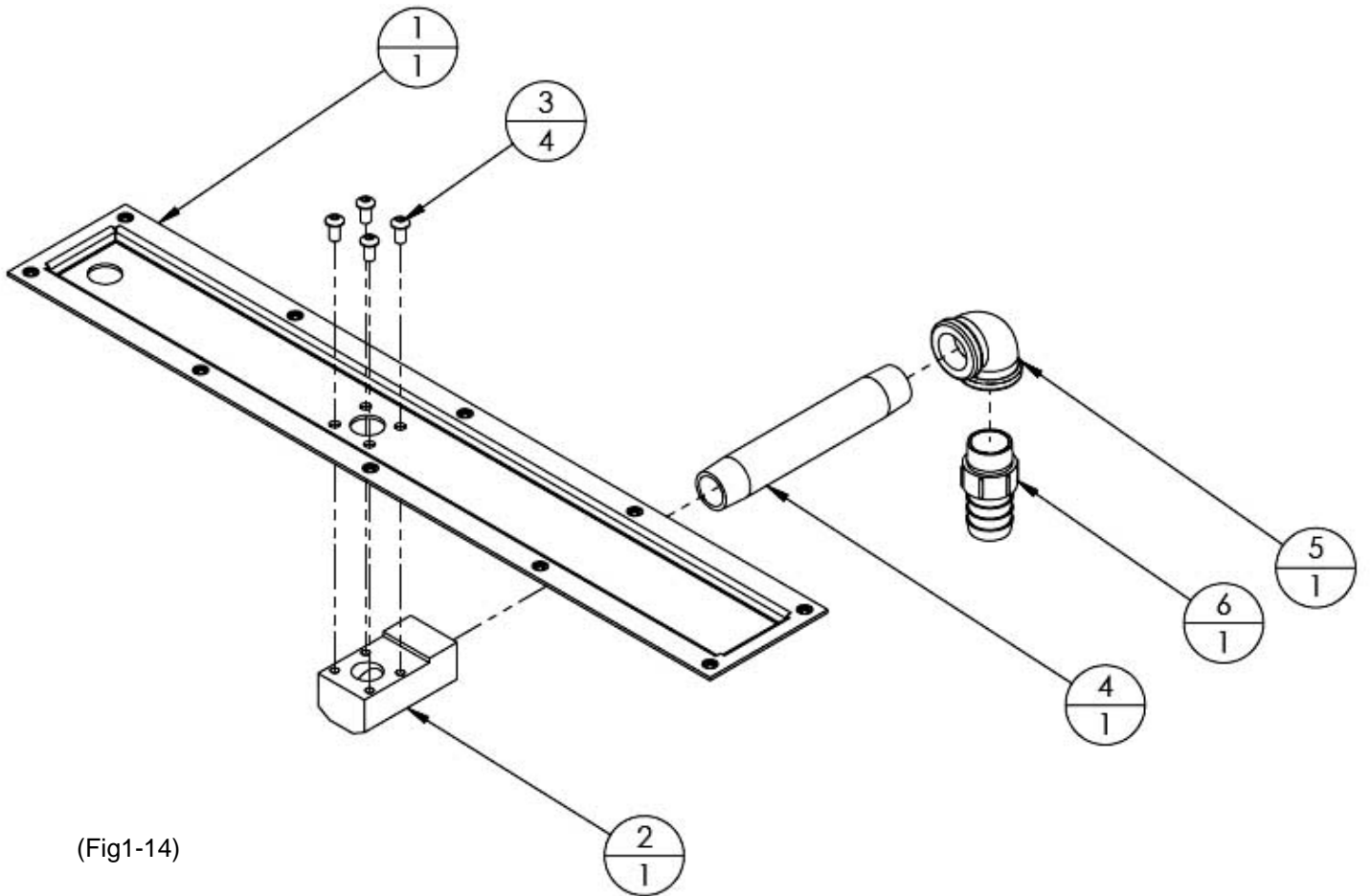
ITEM #	PART #	DESCRIPTION	QTY
1	16000-087	SIDE FRAME	2
2	16003-012	CROSSBAR, FRONT	4
3	16009-188	BRACKET, FRAME SUPPORT	4
4	16009-189	BRACKET, COVER SUPPORT	6
5	16009-202	BRACKET, ELECTRICAL BOX SUPPORT	2
6	16013-300	COVER, FLOOR	1
7	16009-233	BRACKET, BASE MTG.	2
8	99038-005	TUBE END, THREADED, 5/8-11	4
9	99038-004	TUBE ENDS, THREADED, 3/8-16	12
10	99010-017	CASTER, 3"	4
11	99039-091	POP RIVOT, 1/8"	24
12	-	HEX BOLT, 5/8-11 X 6	4
13	-	SHCS, 3/8-16 X 2	4
14	-	BHCS, 3/8-16 X 1	4
15	-	SHCS, 1/4-20 X 2	6
16	-	HEX NUT, 5/8-11	4
17	-	HEX NUT, 1/2-13	8
18	-	FW, 3/8	4
19	-	FW, 1/4	6



(Fig. 1-13)

Assembly, Vacuum Chamber, 16020-818 (Fig. 1-14)

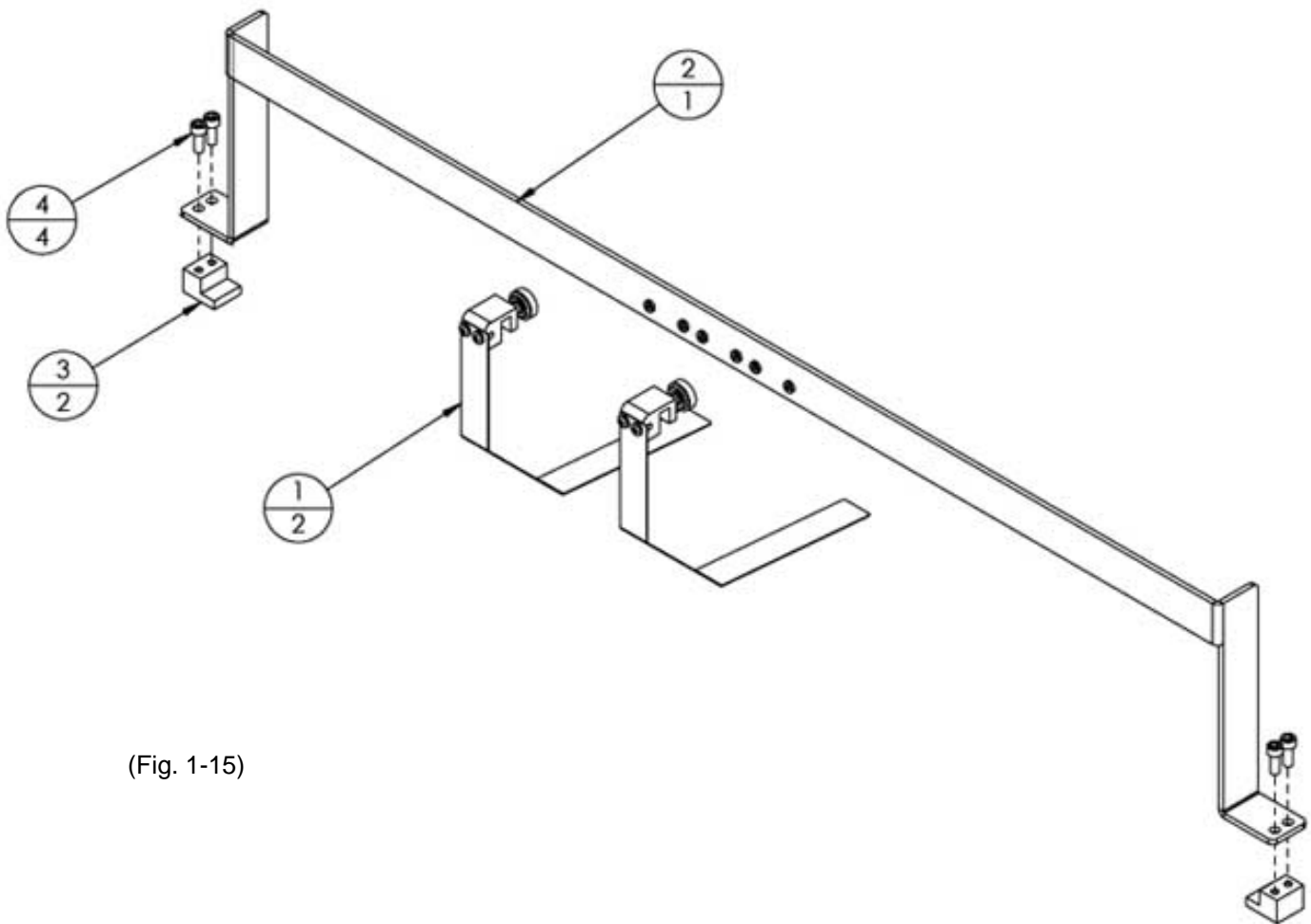
ITEM #	PART #	DESCRIPTION	QTY
1	16013-301	VACUUM CHAMBER	1
2	16007-193	BLOCK, VAC. CHAMBER CONN.	1
3	-	BHCS, 1/4-20 X 1/2	4
4	99028-130	NIPPLE, BRASS, 3/4 NPT X 6"	1
5	99028-058	ELBOW, BRASS-3/4 NPT	1
6	99028-216	HOSE BARB, 1" NPT- 1-1/4" HOSE	1



(Fig1-14)

Assembly, Transition Drag Strap, 16020-822 (Fig. 1-15)

ITEM #	PART #	DESCRIPTION	QTY
1	16020-726	ASSY, DRAG STRAP	2
2	16009-242	BAR, SENSOR MTG.	1
3	16007-033	BLOCK, CLAMP	2
4	-	SHCS, #10-24 X 1/2	4

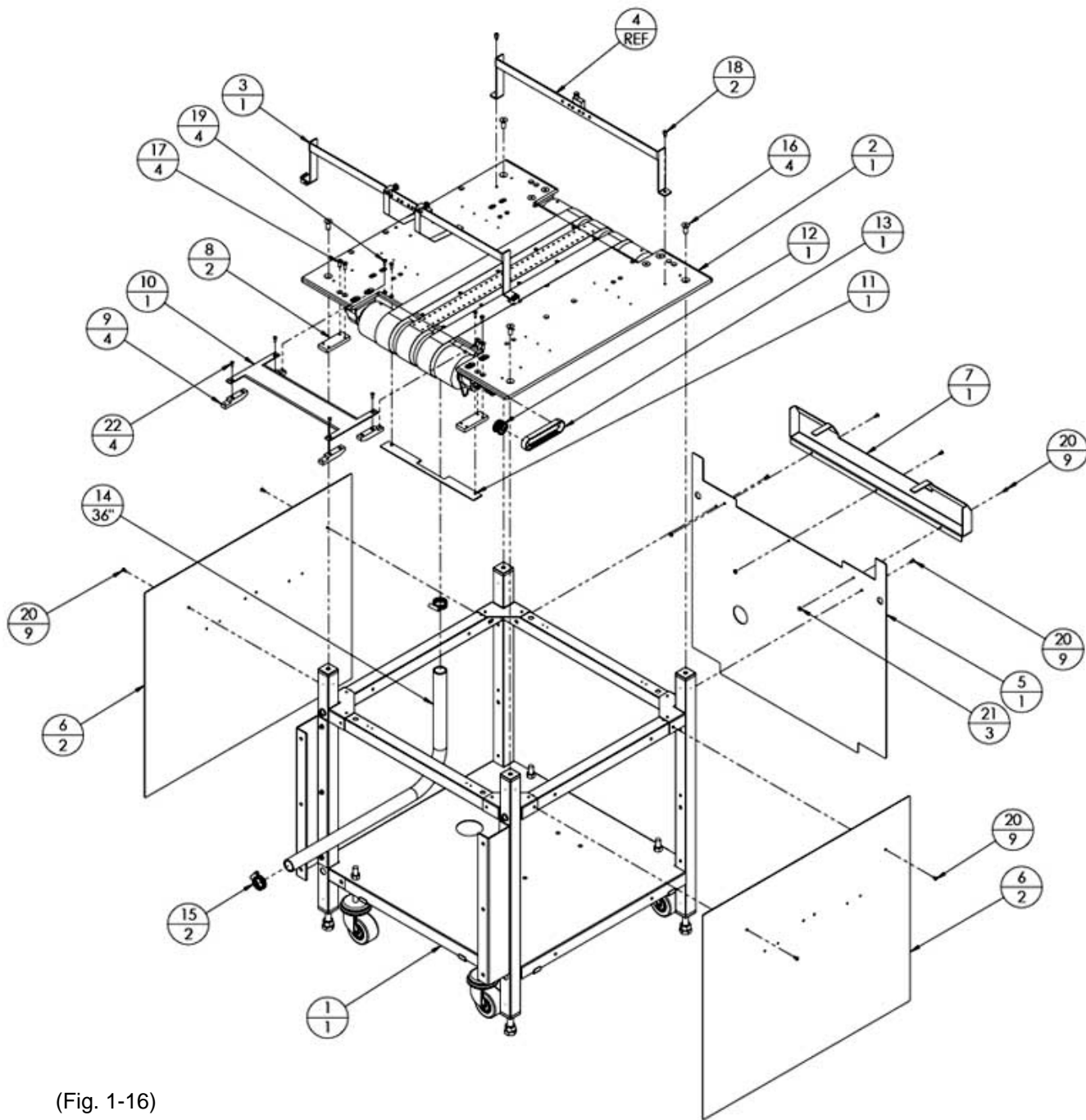


(Fig. 1-15)

PITNEY BOWES

Assembly, FIT Dryer SLV Base, 16022-019 rev (Fig. 1-16)

ITEM #	PART #	DESCRIPTION	QTY
1	16020-811	ASSY, FRAME (SLAVED)	1
2	16020-646	ASSY, VACUUM CONVEYOR	1
3	16020-822	ASSY, TRANSITION DRAG STRAP	1
4	16020-691	ASSY, SENSOR BAR (DIFFUSE)	REF
5	16013-327	COVER, END W/ HOLE	1
6	16013-310	COVER, FRONT	2
7	16013-346	COVER, INFEED (WIDE)	1
8	16009-192	BRACKET, BASE SPLICE	2
9	16007-246	BLOCK, DIVERT GUIDE MTG.	4
10	16013-376	PLATE, TRANSITION	1
11	16013-367	GAURD, ROLLER	1
12	16006-165	PULLEY, TIMING 20-5M-15, 1/2 B.	1
13	99000-365	BELT, TIMING, THD, 320-5M-15	1
14	99031-036	HOSE, SILICONE HEATER, 1"	36"
15	99017-030	HOSE, CLAMP, SS, 11/16" - 1-1/2"	2
16	-	FHCS, 3/8-16 X 1	4
17	-	FHCS, 1/4-20 X 3/4	4
18	-	SHCS, 1/4-20 X 3/8	2
19	-	FHCS, #10-24 X 5/8	4
20	-	BHCS, #10-24 X 3/8	9
21	-	HEX NUT, NYLOC, #10-24	3
22	-	FHMS, #10-24 X 1/2	4



(Fig. 1-16)



End of Publication